



**SIS Dili**

# **SINGAPORE INTERNATIONAL SCHOOL, DILI**



## **HOW TO REACH US**



**Singapore International School - Dili**



**+67076816812**



**Info@sis-dili.com**



**www.sis-dili.com**

# PRICE LIST

## REGISTRATION

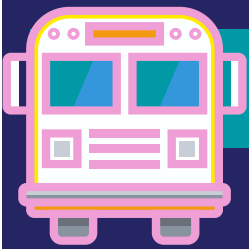


	Timorese	Foreigners	Application	Deposit
One Time	-	-	\$200	1 Month
Yearly	*\$5,000	*\$7,000	-	-

\* Payable in 3 Terms

**\* Discounted price for first 40 parents in each group**

## OTHERS



	School Bus	Books	Uniform	Food
Monthly	\$120	-	-	\$120
Yearly	-	\$200	\$100	-

# GLOBAL PATHWAYS

Students take internationally recognized exams at grade 6 and grade 10.



**Grade 6 Exam**  
Students who do well will gain entry into Singapore Public Secondary Schools.



**Grade 10 Exam**  
Students who do well are eligible for preparatory courses in universities worldwide including UK, USA, and Australia.



Our curriculum is designed to ensure that foreign students can seamlessly return to their home countries at anytime.



# TEACHERS

## SUBJECT TEACHERS

Singaporean

Singapore MOE  
trained

20 plus years of  
experience each

## CO-TEACHERS

Locals

Experienced Teachers

Fluent in English



**Ladies of SIS at Rotarian Cup**



# Academic Programs

SIS-Dili Syllabus is endorsed by Singapore  
Ministry of Education



## CORE SUBJECTS

English

Math

Science

Chinese  
Portuguese



## SPECIAL PROGRAMS

Arts

Music

PE

Computer



## EXTRA CURRICULAR

Life Skills

Character  
Development

Games

Sports





# SAFETY & ADDITIONAL SERVICES



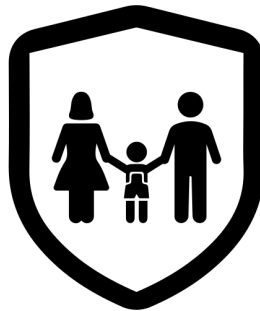
A well-stocked library in each class for reading



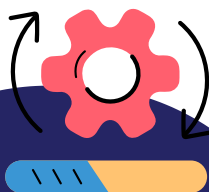
Healthy and delicious meal served in our school canteen



Safe and reliable school bus services for pick-up and drop-off



24/7 security staff on campus



Entry and exit procedures aimed at keeping the students safe.



Students' physical, mental, and emotional safety as our main concern.

# RECENT EVENTS

A fun immersion camp filled with exciting activities focused on Singapore Curriculum was held at our school ground on November 16, 2024.





# PLAY AREAS



**A safe, rubberized play area**  
**A huge playground**



**Large Street soccer court**